

- Pre-installed ViewBoard® Cast and Zoom
- USB multimedia player
- Supports HDMI CEC pass-through
- Flicker-free and Blue Light Filter eye-care technologies
- HDMI, VGA, RS232, RJ45 input compatibility

The ViewSonic® CDE7500 is a 75" 4K Ultra HD display with conferencing capabilities. With features including a razor sharp resolution of 3840 x 2160, ultra wide viewing angles, 2 x 20W speakers, and file sharing software, the display has been designed with the meeting room scenario in mind. The pre-installed ViewBoard® Cast content sharing and Zoom conference software enables multiple users, whether on-site or on-line, to participate in conferences and share content with each other simultaneously, transforming CDE7500 into a dynamic content hub. This display's integrated dual-core processor and 16GB internal memory allows users to play multimedia content from a USB without the need for a PC, while the HDMI and VGA inputs offer connection with a variety of high definition devices. Flicker-free and Blue Light Filter eye-care technologies provide viewing that is comfortable for the human eye, from start to finish.

4K Ultra HD Resolution

With four-times the resolution of Full HD, this Ultra HD 3840 x 2160 display delivers a breathtaking viewing

experience with immersive images that are vibrant, clear, and as large as life.



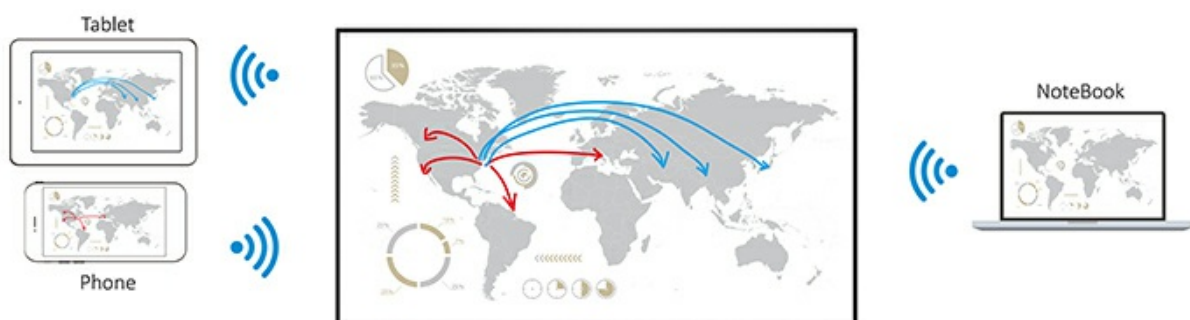
Integrated USB Multimedia Player

This display features an integrated media player with a convenient USB playback function. Now photos, music, and 1080p video can be quickly displayed on-screen directly from a USB drive – without the need for a PC.



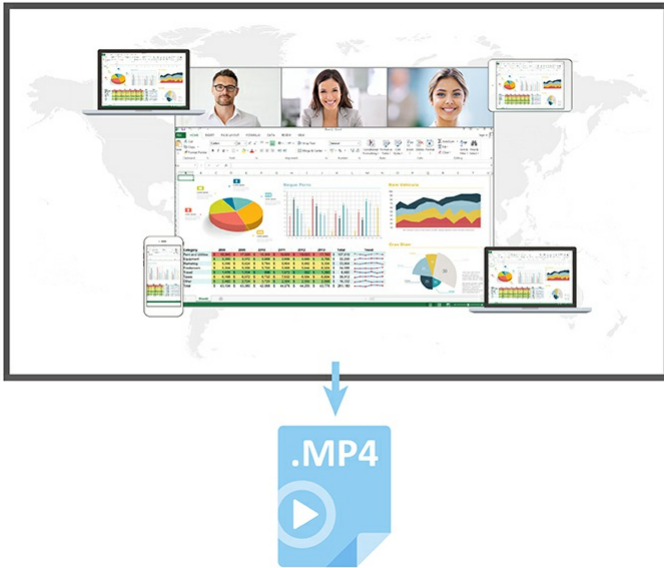
ViewBoard® Cast Content Sharing Software

ViewBoard® Cast is a content sharing app for mobile devices that enables 1080p content to be streamed from a user's device onto ViewBoard® wirelessly or over a cable network.



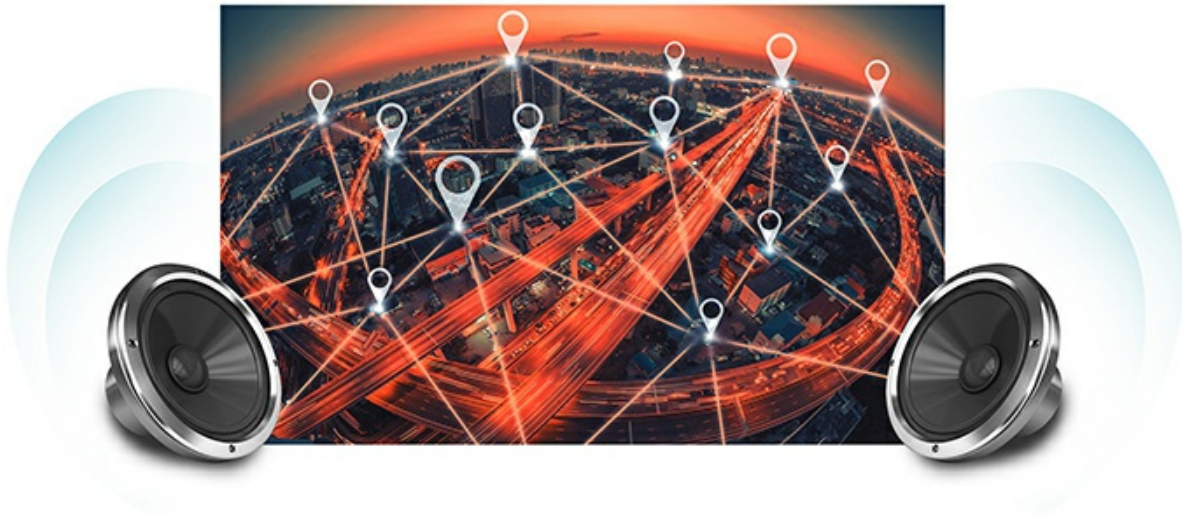
Zoom

Zoom is a conferencing app that enables content to be streamed from a user's devices onto ViewBoard® over the internet or an international wireless services (including cell phones and landlines). It supports up to 10 participants, allowing 4 of the 10 to stream content from their laptop or smart phone.



Powerful Dual Speakers for Crystal-clear sound

Its 40W speaker design delivers incredible sound while combining eye-catching multimedia content with high-quality sound effects—creating a lasting audio-visual impression on your audience.



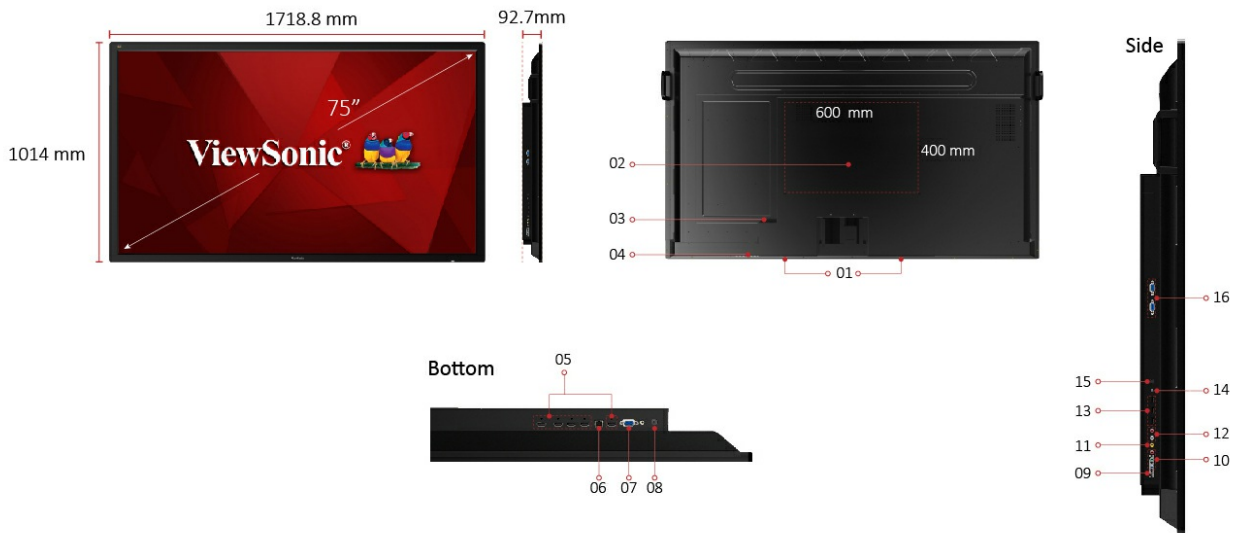
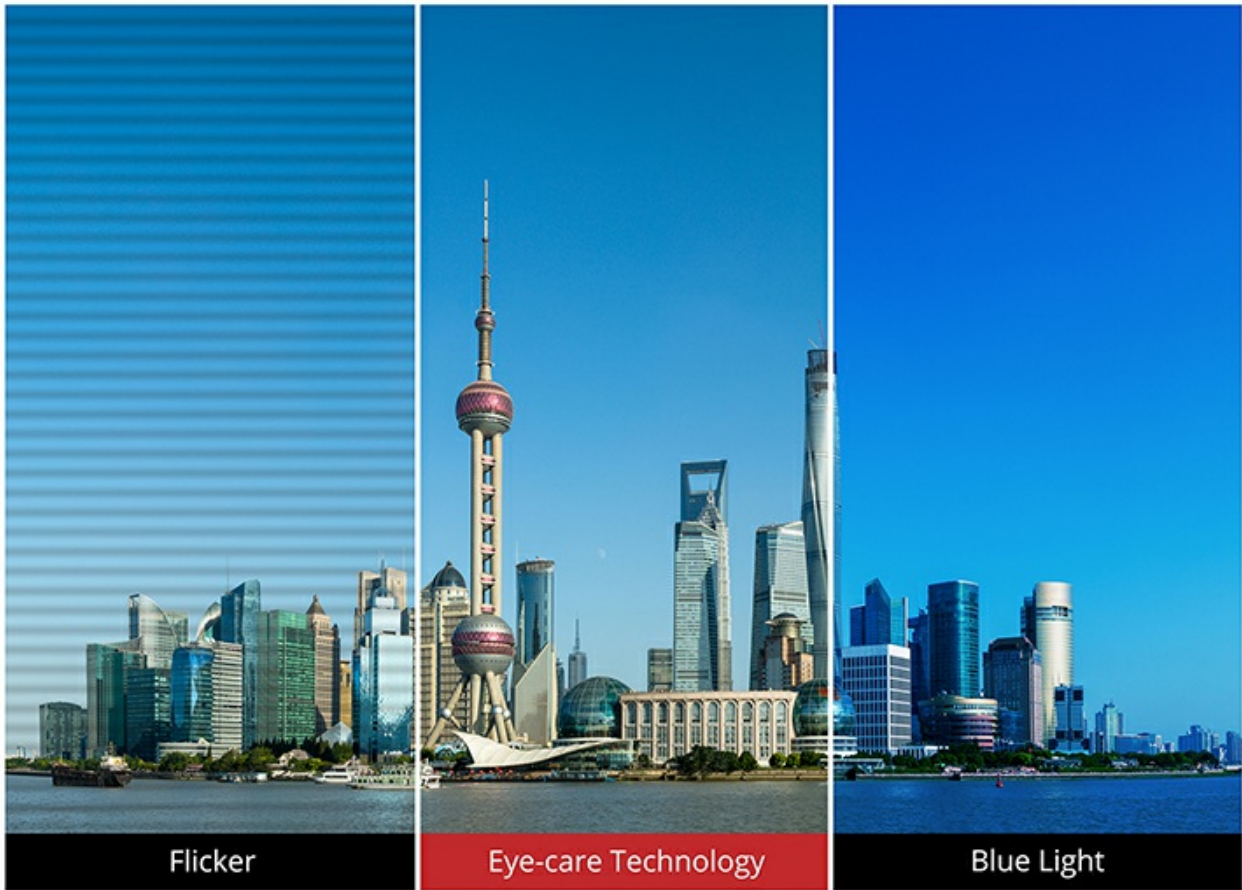
HDMI CEC Opens A World of HDMI Possibilities

With HDMI CEC functionality, remote controller signals can be transmitted via HDMI cable to connected HDMI devices. This enables out-of-sight DVD players, sound systems, and other devices to be directly controlled with the display's remote controller for a wider range of viewing possibilities.



Eye-care technologies for comfort viewing

This display adopts exclusive Flicker-Free and Blue Light Filter eye-care technologies. By nearly eliminating screen flickering at all brightness levels via a constant LED light source and reduced blue light exposure, the display ensures longer viewing time and increased eye comfort for presentation and multimedia experiences – without eye fatigue.



1. Internal Speakers
2. VESA Compatible® Wall Mount 600 x 400 mm
3. AC In
4. Menu Controls
5. HDMI ports
6. LAN ports
7. VGA port

8. VGA-AUDIO
9. AV-OUT
10. YPbPr/YCbCr IN ports
11. AV-IN ports
12. AUDIO-IN port
13. USB ports
14. Headset port
15. SPDIF port
16. RS232 IN/OUT port

Technical Specifications

LCD PANEL	Panel Size	75"
	Type/ Tech	TFT LCD Module with LED Backlight
	Display Area (mm)	1649.66(H) x 927.94(V)
	Aspect Ratio	16:09
	Resolution	3840 x 2160
	Colors	1.07B colors (10bit)
	Brightness	450 nits (typ.) 400 nits (min.)
	Contrast Ratio	1200:1 (typ.)
	Response Time	8 ms
	Viewing Angles	H = 178, V = 178 (typ.)
	Backlight	DLED
	Backlight Life	30,000 Hours Min.
	Hardness	7H
INPUT	HDMI	x 4
	RGB / VGA	x 1
	Audio	x 1
	CVBS (AV)	x 1
	YPbPr	x 1
	RS232	x 1
	PC Slot	x 1 PC Slot
OUTPUT	HDMI	x 1 (for one of HDMI1/2/3)
	Audio (Earphone out)	x 1
	SPDIF	x 1
	RS232	x 1
LAN	RJ45	x 1
USB	2.0 Type A	x 2 (side x1, top x1)
	3.0 Type A	x 2 (side)
SPEAKERS		20W x 2
BUILT-IN PC	Processor	ARM Cortex A53 Dual Core 1.5G Hz CPU
	Memory	2GB
	Storage	16GB
COMPATIBILITY	VGA	Refer to timing table

	HDMI	480i, 480p, 720p, 1080p, up to 2160p
	CVBS	480i
POWER	Voltage	100-240 VAC +/- 10% Wide Range, 50-60Hz +/-3 Hz
	Consumption	300 W
	EEl Rating	B
ERGONOMICS	Wall Mount (VESA®)	600 x 400mm; Screw: M8 x 20mm
OPERATING CONDITIONS	Temperature (° C)	32°F to 104°F (0°C to 40°C)
	Humidity	10% ~ 90% non-condensing
DIMENSIONS	Physical w/o Stand (mm / inch)	1735.4 x 1014.0 x 93.2 mm / 68.32 x 39.92 x 3.67 inch
	Packaging (mm / inch)	1990 x 1165 x 320 mm / 78.35 x 51.77 x 13.78 in
WEIGHT	Net (kg / lb)	kg / lbs
	Net w/o Stand (kg / lb)	43.05 kg / 94.91lbs
	Gross (kg / lb)	65.40 kg / 144.18lbs
REGULATIONS	Standard	cTUVus, FCC, MX-CoC, Mexico Energy, CE, CB, RoHS, ErP, REACH, WEEE, CCC, China Energy Label

ViewSonic® Limited Warranty

ViewSonic provides customers with the security of a manufacturers warranty against defected products. The type and duration of the applicable warranty service varies by product type, country of purchase and can also vary on an individual basis according to customer requirements agreed at time of purchase. The warranty will expire after the end of the warranty period.

For more product information, visit us at www.viewsoniceurope.com

All rights reserved by ViewSonic Corporation. All other Corporate names and trademarks are the property of their respective companies. E&EO. All prices and specifications are subject to change without written notice. Images are for illustrative purpose only. Terms & Conditions Apply.