

# L920

## A920 Docking Station

Great for restaurants, cafes, bars and clubs | A natural home for your A920 | Ergonomically designed | Faster terminal charging | Ethernet & Bluetooth cordless solution



Improve your clientele's perception and your staff's efficiency by using the sleek L920 docking station as the natural home for the A920 Android terminal by PAX.

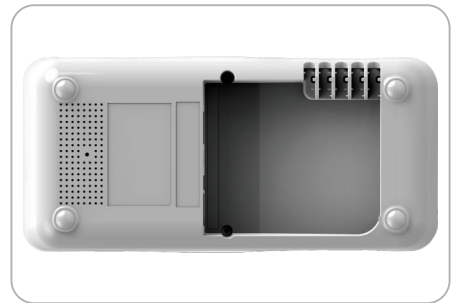
Staff will immediately know where to pick up & drop back the terminal from, plus it ensures the A920 is kept at optimum levels of charging, ensuring peak performance at all times.

The L920 comes in 3 versions:

- > L920-BC for charging-only
- > L920-BM with Ethernet & USB
- > L920-BE with Ethernet + Bluetooth & USB

Bars and clubs will find the multifunctional base options particularly useful, as the L920's Ethernet and Bluetooth functionality allow the A920 to be used even when there is bad telecom signal receptivity in crowded, indoor, or basement type locations.

# L920 A920 DOCKING STATION



## SPECIFICATIONS

Model	L920-BC	L920-BM	L920-BE
Product Type	Charging Base	Multifunctional Base	Wireless Base
RS232	N / A	Default (RJ45 x 1)	Default (RJ45 x 1)
LAN	N / A	RJ45 x 1 (Ethernet, 100M)	RJ45 x 1 (Ethernet, 100M)
USB	Micro USB x 1 (Charging Only)	Micro USB x 1 (Charging Only) USB Type-A x 2 (HOST)	Micro USB x 1 (Charging Only) Micro USB x 1 (Device) USB Type-A x 1 (HOST)
Bluetooth	N / A	N / A	4.0
Power Supply	5V/2A (Micro USB)	5V/2A (Micro USB)	5V/2A (Micro USB)
Weight	99g	132g	134g
Operating Environment	Operating Temperature: 0°C ~ 50°C Relative Humidity: 5% ~ 95% (non-condensing)	Operating Temperature: 0°C ~ 50°C Relative Humidity: 5% ~ 95% (non-condensing)	Operating Temperature: 0°C ~ 50°C Relative Humidity: 5% ~ 95% (non-condensing)
Storage	Storage Temperature: -20°C ~ 70°C Relative Humidity: 5% ~ 95% (non-condensing)	Storage Temperature: -20°C ~ 70°C Relative Humidity: 5% ~ 95% (non-condensing)	Storage Temperature: -20°C ~ 70°C Relative Humidity: 5% ~ 95% (non-condensing)